



**Vander Waay**

# **Top Cleaner Poly**



**Roof Cleaning Equipment**

**[www.vdwaay.nl](http://www.vdwaay.nl)**

## A SHORT ROI

With an acceptable investment and quick yield! This is how you put a halt to a filthy poly greenhouse roof and how you can achieve a significantly higher light percentage in your greenhouse. More light means a higher production and leads to a higher yield. The Top Cleaner Poly greenhouse roof cleaner delivers in the winter season in particular, also in areas with a lot of sun.



## Top Cleaner Poly roof washer [TP0960/1280/1440]



- A lightweight gutter cart with an extremely reliable hydraulics unit, that rides through the greenhouse gutter by means of the two electric driven wheels
- A powerful "on board" Honda 4 stroke generator 230V
- Brush arms with a number of hydraulic driven, fully adjustable disc brushes on both sides of the gutter cart
- Sensors in front of the wheels stop the machine at the end of the greenhouse
- Built in hoisting sling
- Galvanized steel transport/ storage crate for roof washerTransport/ storage frames for disk brushes
- Slide ladder with rolling hose guider





***Adjustable hydraulic driven brushes***



***Transport and storage crate***



***Easy to hoist on the roof***



***Powerful Honda generator***





## Top Cleaner Poly spray boom [TPSB960/1280/1440]

The Top Cleaner Poly is a multifunctional machine; it can therefore achieve more than just clean the poly roof. It can also brush aluminium greenhouse gutters, and you can use additional integrated spray booms to quickly apply a very even coating layer. Powder chalk can be applied with a spray gun while standing on the machine.





## Hydraulic hose reel on wheels [SH0960]

This powerful all terrain hydraulic driven hose reel stores up to 300 m 5/8" high pressure hose. The high volume diaphragm water pump ensures that a large amount of water is available for the brushes.



## Chalk pump trailer [960PTO1600]

For your convenience, we also provide a pump trailer, with a diaphragm pump designed for coatings, on which is mounted the aforementioned hose reel. The chassis is powder coated and is easy to move because of the two large all terrain wheels and towing hitch.

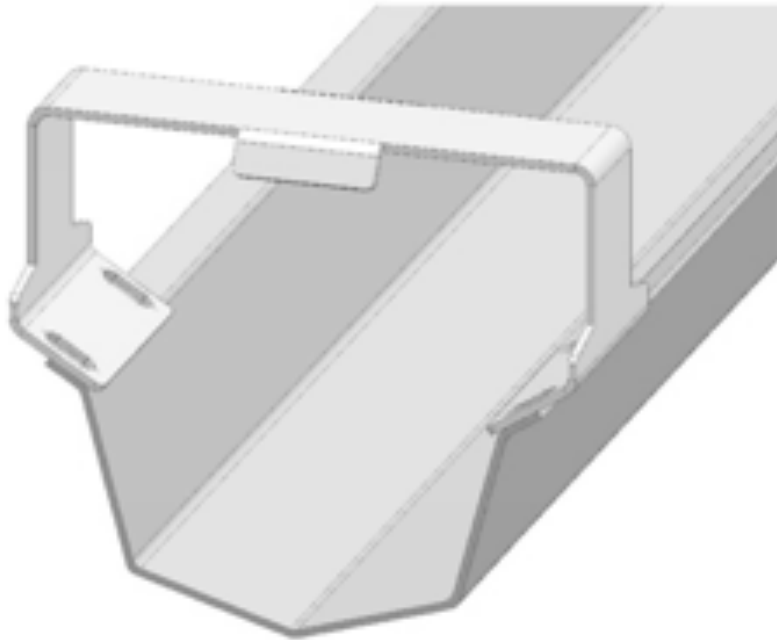


Inside the 1,600 L mixing tray we mounted a stainless steel, hydraulic driven stirrer. The trailer can be powered by the PTO from your tractor.



## Solid end of gutter stop [141010]

A robust and incontrovertible stopper, assembled on all gutter ends, is a must and contributes to a safe system on the roof. To avoid any personal injury material damage we strongly recommend these stops!



### Disclaimer

This information is not binding. Visual and technical specifications may change due to innovation.